

# Operations – July 2018 Update

## THIS NOTICE IS PART OF SYDNEY MARKETS' REGULAR UPDATES TO TENANTS

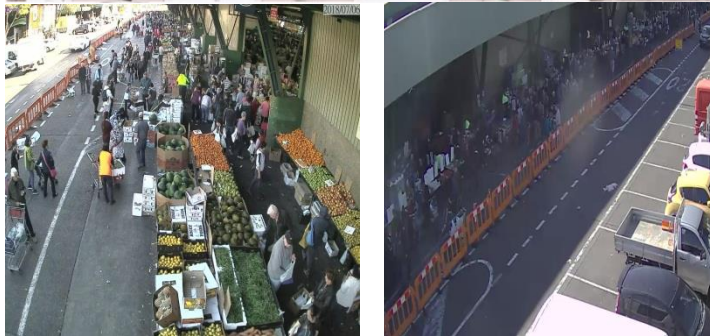
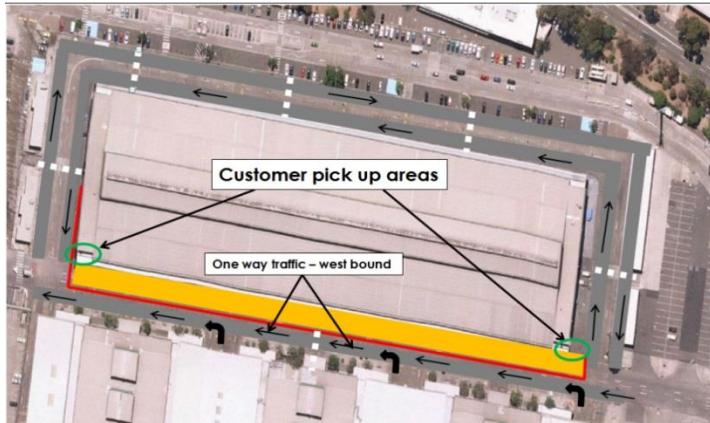
### PADDY'S FRIDAY- TRAFFIC MANAGEMENT PLAN (TMP) TRIAL

Traffic Management changes have been made on Centre Road for Paddy's trade on Friday's, aiming to further separate and reduce pedestrians and vehicular (including forklift) interaction. This plan has been in place since Friday 4 May 2018. SML received very positive feedback from both traders and customers.

Following consultation, the Saturday TMP trial commenced on 16 June and will continue through to the end of July 2018.

SML would like to thank all stakeholders for their assistance and cooperation with safety improvements undertaken within the Sydney Markets site.

For more information, please contact SML Work Health and Safety Manager, Mr John Pascucci on 0417 325 171 or Retail Team Leader on 9325 6224.



### BUYER PEDESTRIAN ACCESS REMINDER

- All tenants, their employees must ensure they hold valid GTA passes. The GTA Pass must be clearly displayed – lanyards are available at all Market Offices.
  - Forklift Drivers must display and show their GTA pass on each entry to the GTA prior to pedestrian entry times (on a lanyard or clear pocket on Hi-Vis vest or shirt).
  - No Pedestrian Access will be permitted through the Main GTA vehicle entry gates.
  - All vehicle occupants (including passengers) entering the GTA must also hold a GTA Pass.
  - Forklifts are not permitted in the Buyers' walks between 3:00am - 8:00am on Monday & Friday and between 3:30am - 8:00am, Tuesday to Thursday.
- Turnstiles must be used prior to Pedestrian Access times.

### BUYER PEDESTRIAN ACCESS

Monday and Friday at 3:00 AM  
Tuesday to Thursday at 4:00 AM

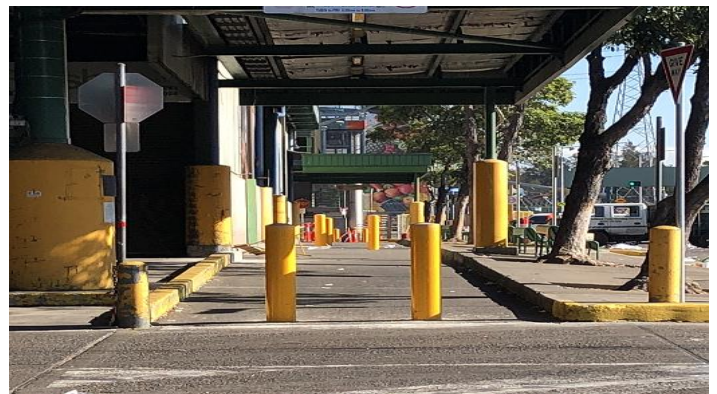
### BUYER VEHICLE ACCESS

Monday to Friday at 6:00 AM

**These Times will be STRICTLY ENFORCED with penalties of \$500 for unauthorised entry to GTA.**

### PEDESTRIAN ACCESS ROLL OUT

Safety Bollards have been installed in ramp ways on the north and south ends of Buildings A, B & C. This provides a dedicated safe walkway, part of SML's priority to reduce vehicular (forklift) and pedestrian interaction.



### NEW COUNTRY OF ORIGIN LABELLING

A **REMINDER** that all Retail Traders at Sydney Markets and Haymarket must display a *Country of Origin* label.

Country of Origin labelling has now become mandatory following a two-year transition period.

From 1 July 2018, both imported and locally produced food must comply with the NSW Food Authority Standard Code. Labelling must be in English and be on a separate sign displayed near the food.

The Australian Competition and Consumer Commission (ACCC) has published guidance to help businesses comply with the new requirements. For more information please check the ACCC and/or the Food Authority web sites.

### ENVIRONMENT UPDATE

Despite cold weather, 71% of our total waste was recycled in June, with 138 tonnes of cardboard collected. Food waste to charity has increased significantly in the past year with over 1,890 tonnes donated by Market Tenants.

Cardboard collection and recycling has improved due to initiatives implemented by Veolia Environmental Services. ***We managed to divert and recycle a record of 1,710 tonnes of Cardboard in the past 12 months.*** Clean cardboard can be left at the end of the Dockway for Wholesalers/Warehouses or taken directly to Green Point. Paddy's Standholders can leave the Cardboard in their stands at the end of trading and it will be collected by our waste Contractor Veolia.

Please ensure all fruit and vegetable waste is separate from packaging and taken to Green Point for recycling, and the separated packaging placed inside Cardboard bins (similar to watermelon bins). This will reduce contamination and helps our recycling process.

Please ensure you keep food waste bins clean from packaging or you may be charged additional costs for disposal. This also applies to plain pallets, which should be taken directly to Green Point for re-use or recycling. Our Polystyrene machine recycles polystyrene boxes much faster and efficiently.



- If you would like to donate any suitable food waste for charity you can drop it off in the Rail Area beside the Weighbridge, Flemington Tuesdays and Fridays from 8:30am.
- Many thanks to all the Tenants who have donated.

GREEN POINT OPERATION HOURS:		
Wholesale & Growers	Mon to Fri	8.30am – 2.30pm
Sydney's Paddy's Markets (between Buildings A & B)	Fri and Sun	3.00pm – 6.00pm
Sydney's Paddy's Market (outside Building D – Door 4)	Sat ONLY	3.00pm – 6.00pm

For further information on how you could make a difference contact the Environment Manager, Mr Con Kapellos on 0417 325 173.

**"Dob in a Dumper" if you see anyone dumping rubbish around the site call us immediately on 0409 325 232**



### KEEP OUR MARKETS CLEAN

Sydney Markets Limited is committed to providing a clean and safe environment. Tenants within Buildings A, B, C, D, E are also responsible for keeping work areas clean, including the buyer's walkways and common areas in all Buildings within the Markets. **You should not use a blower as this causes dirt to be blown onto neighbouring stands and stock.**

If you require a red lid General Waste bin or green lid Organic Waste bin contact the Environment Manager Mr Con Kapellos on 0417 325 173. Remember – *Do the right thing! Help keep our Market clean and safe!*

### PROPERTY UPDATE

#### SHOP 9-10 MEDICAL CENTRE

We are pleased to announce that Shops 9-10 in the Plaza Building has been leased to Optimal Health Group Pty Limited who will facilitate a Medical Centre, anticipated to open in August 2018. More information will be provided on trading times and days.

For all property enquires, contact Shawn Freeburn on 9325 6240.

Existing retail tenants in the Plaza are CBA, Westpac, ANZ, BOQ, Australia Post, Newsagency, Subway, Tigers Leagues Club, Pet Store, Chiropractor, Bakery, Café, Mobile Phone Retailer, Hairdresser and Butcher, along with commercial tenants such as Accountants, Dentist, & other professional services, plus a Hotel and Veterinary Hospital.

#### SIGNAGE ON WAREHOUSE & WHOLESALE PREMISES

All Wholesale and Warehouse tenants are to erect a sign above the premises displaying the legal entity and/or the trading name of the business occupying the premises. All proposed signage requires an application for approval to be lodged with Sydney Markets Limited (SML) prior to the erection of the sign.

#### SYDNEY MARKETS CONFERENCE CENTRE

The Sydney Markets Conference Centre is available for hire. The Centre can be used as one large room or be divided into two. **For details and bookings please contact the Executive Assistant on (02) 9325 6298.**

### NO SMOKING (CIGARETTES & E-CIGS)



All Plaza tenants are reminded that **Shops** and **Office** suites are **SMOKE FREE ZONES**. Occupiers of any Market space are required under the **Smoke Free Environment Act** to see that persons do not smoke in their premises. New legislation

now prohibits E-cigarettes in the Smoke Free Zones as well.

### WORK HEALTH & SAFETY WEBPAGE

SML has introduced a dedicated Work Health and Safety (WHS) Webpage for all stakeholders on the Sydney Markets website. The webpage contains the Sydney Markets Work Health and Safety Management Plan and details of Safety Notices, Bi-Monthly Operations updates and Site Services Notices.

<http://www.sydneymarkets.com.au/>



Your feedback is important; if you have any queries in regards to the webpage, please contact the WHS Manager, John Pascucci on 0417 325 171.

**PERSONAL PROTECTIVE EQUIPMENT (PPE)**

All people attending the Wholesale Produce, Growers and Flower Markets from Monday to Friday must wear high-visibility vests and appropriate footwear.



**SYDNEY MARKETS**

Vests can be purchased from vending machines onsite. Speak to a Market or Security Officer for directions to vending machine locations.

### SAFE FORKLIFT OPERATIONS

- It is compulsory to wear a seat belt. Comply Notices will be issued for non-compliance. Forklifts without seatbelts cannot be used until a seatbelt is fitted.
- Directional signage and other road signage **MUST** be followed.
- Speed limits are enforceable (10kph under canopies, 20kph in open areas, 5kph on the forklift bridge).
- Forklifts should be governed to no more than 20kph. Forklift governors are randomly checked by SML staff to ensure they have not been tampered with (where possible).
- Pedestrian safety – be aware of pedestrian crossings and access ways.
- Forklift drivers must have a current drivers Licence and HRW (High Risk Work) Licence from WorkCover/SafeWork Certificate to drive on roads within the Market site. These must be carried on drivers at all times.
- When operating a forklift on site you are not permitted to carry more than 15 empty pallets or to push any pallets of produce along the ground.
- Defective forklifts are to be reported to the business owner (principal).
- Forklift operators are not permitted to carry passengers on forklifts.
- Travel in a forward direction when not carrying a load. Only travel in reverse whilst carrying a load that would obstruct your vision if travelling forward.
- Forklift lights must be turned on when operating at night.
- No mobile phones or two way radio devices to be used while operating forklifts.
- Do not operate any vehicle when under the influence of drugs (which may include some prescription drugs) or alcohol.
- No vehicles are allowed inside the buyers walks of Buildings A, B and C from:
  - 3.00am to 8:00am Monday and Friday
  - 3.30am to 8.00am Tuesday to Thursday.
- RMS Road Rules must be adhered to at all times
- No person is to travel or be lifted on the tines of a forklift.
- Do not carry items on the forklifts other than what the forklift is designed to carry on pallets.
- Forklift drivers must not smoke, eat, drink, or use listening devices (e.g. iPods, mobile phones) whilst operating a forklift.
- Do not leave forklifts unattended whilst the forklift is still running.
- Do not leave the keys in the ignition of the forklift whilst the forklift is unattended.
- No pushing or pulling of other vehicles (including deliberately colliding with other forklifts), whilst operating a forklift.
- No 'hooning' or overtaking whilst operating a forklift.

**SLOW DOWN • BUCKLE UP • STAY SAFE**

For further information and enquiries please contact SML's Operations Manager, Adrian LaCava on 02 9325 6170.

#### Hotline number 0409 325 232

If you observe any reportable offence such as dumping, suspicious behaviour, transshipping, safety concerns or anything you believe to be reportable, please do not hesitate to contact the Hotline number

**Brian Bigelow**  
Head of Operations