

LEADER

NEW

SOLAR POWERED CAR PARK OFFICIALLY OPEN

- | FUTURE OF THE MARKETS
- | CAR PARK V EXTENSION
- | PADDY'S MARKET NEWS

ISSUE 1 CONTENTS

- 03 CEO's Perspective
- 06 Opening Ceremony Car Park V
- Extension
- 08 Paddy's Market News
- 10 Chinese New Year
- 12 Lunar Festival
- 14 Paddy's Kombi
- 16 Operations Update
- 19 Site Services Update
- 22 Property Update
- 23 Environment Update
- 25 Markets Personality
- 26 Staff Update
- 27 Employee of the Month

SYDNEY MARKETS LIMITED

ABN 51 077 119 290
PO Box 2, Sydney Markets, NSW 2129
W: www.sydneymarkets.com.au

ADVERTISING AND EDITORIAL ENQUIRIES

The Editor
Sydney Markets Limited
P: 02 9325 6200
E: shirlene.blom@sydneymarkets.com.au

UPCOMING EVENTS

MAY

12 Spice Festival

14 Mother's Day

JUNE

13 Queen's Birthday

JULY

19 The Fresh Awards



®Registered trademarks of Sydney Markets Ltd

CEOs'S

PERSPECTIVE



Brad Latham
Chief Executive Officer
Sydney Markets Limited

FUTURE OF THE MARKETS STUDY

SML has been working with consultants Charter Keck Cramer & Root Projects Australia over the past few months to undertake an in-depth analysis of the current operation and future needs of the Markets and to subsequently develop a property strategy.

It is acknowledged that the Flemington site is extremely well located and our current site will continue to be a world leader in wholesale and retail market operations for at least 10 to 15 more years.

Excellent facilities and efficient operations will however be critical to ensuring our Markets can continue to support the needs of the businesses and people that rely on them well into the future.

Stage 1 of the project is now complete and involved gaining a clear understanding of the long-term needs and future use requirements of the existing Flemington site and providing an optimal model for an 'ideal' future Markets operation.

The outcomes of Stage 1 which were noted on the Future of the Markets Project Stakeholder Update booklet, now leads us into Stage 2 of the project where investigations will commence for a potential future development site. Dialogue will continue with Government on this issue.

It is important to note that SML will continue to maintain and optimise our current site for the benefit of all stakeholders. We will continue to provide regular updates to all stakeholders on the progress of the project.

CAR PARK V EXTENSION

In recent years Sydney Markets has executed several ground-breaking initiatives as part of our commitment to sustainability and our community.

On the 14th March 2017, the NSW Planning Minister, The Hon. Anthony Roberts MP, attended the official opening ceremony and unveiling of the newly built solar structure and extension to Car Park V.

The industrial scale solar carport system built as part of Sydney Markets' continued commitment to environmental sustainability. The 640kW structure will save 936 tonnes of carbon each year – the equivalent of taking 522 small cars off the road annually.

Through the investment in large scale solar infrastructure, we have improved the Markets' green credentials while reducing its consumption of energy from fossil fuels. The power being generated by the car park's solar system is the equivalent of 257 houses being efficiently powered each year.

Along with the other two solar systems on site, it brings Sydney Markets' total renewable energy capacity to about 900kW. The customised solar installation will also attract Large Scale Generation Credits (LGCs), meaning Sydney Markets can trade renewable electricity generated above the power station baseline to likeminded companies.

PADDY'S MARKETS

In September 2016, the Board approved in principle, the Optimal Layout & Product Mix for the Haymarket Masterplan. Following a detailed review of the Optimal Layout, it was agreed this model was both too costly and operationally difficult to achieve.

Management are currently working with Consultants to develop a new revised model which takes a more conservative approach to achieve significant building improvements, through upgrades to internal finishes and fittings, as well as better stand displays and maximisation of the number of lettable stands.

Stakeholders will continue to be updated as plans progress into the future.

THE FRESH AWARDS

SML launched its new awards concept - The Fresh Awards in 2016. This resulted in a new and improved awards program recognising the achievements of growers and independent retailers who trade in the Markets.

Over 500 independent retailers and growers participated in the program, with retailers being evaluated through an intensive mystery shopping program. The Fresh Awards will continue this year taking place on the 19th of July at the Museum of Contemporary Arts, Sydney.



smeg50style.com.au

S M E G



Body and Style.

Looking after yourself always begins with choosing the finest ingredients.

CAR PARK V EXTENSION

OFFICIAL OPENING CEREMONY

On the 14th March 2017, the NSW Planning Minister, The Hon. Anthony Roberts MP, joined The Chairman of the Board John Pearson to unveil a commemorative plaque in honour of the newly built solar powered extension to Car Park V.

The event was well received and was attended by Jodi McKay - Member for Strathfield, local media, SML Board Members, Management and Staff.





HAVE YOU SEEN THE MURAL AT PADDY'S HAYMARKET?

The Mural at Paddy's Haymarket was painted by a group of highly skilled artists over a period of 5 days. The artwork shows a comparison between the past and the present, allowing customers to place their hands in the centre of the Mural making it appear as though they are peeling back the past to reveal the present. Customers are encouraged to take photos and share the images via social media.





MARKET
CITY

Paddy's
YSMARETS.COM

All you
need
Level 1

Outlet
Store
Level 1

Paddy's
YSMARETS.COM

Paddy's

PADDY'S CHINESE NEW YEAR

HAYMARKET



FLEMINGTON



LUNAR FESTIVAL 2017

The Lunar Festival kicked off on Friday 13th and Sunday 15th January and continued on Friday 20th and Sunday 22nd January 2017. The festival included themed food offerings through the Friday and Sunday traders. Customers were given the chance to win prizes through a spinning wheel, including fruit baskets, flowers and Chinese sweets.

Entertainment included:

- Chinese Traditional dancing
- NSW Vietnamese Elderly Group
- Taiko no Wa
- Vietnamese singers





PADDY'S MARKETS KOMBI

The Paddy's Markets Kombi has made its way through the streets of Sydney as part of a community event promotion with Nova 96.9. Fresh fruit, flowers and Paddy's merchandise was given away on Valentine's Day at Wynyard Station and at events such as Kogarah's open air dance festival for One Billion Rising, the Westmead Children's Hospital and the Parramasala Festival held in Parramatta.



Listen to your
new style of radio...

9
5
4
AM | **TALKING**
lifestyle
DIGITAL | ONLINE | MOBILE



TRAVEL | WELLBEING | FOOD & WINE | HOUSE & GARDEN | TECHNOLOGY | MONEY

www.talkinglifestyle.com.au

OPERATIONS UPDATE

FLOWER MARKET PARKING CHANGES

SML has commenced a three month trial of changes to the unreserved parking at the rear of the Flower Market. These spots have been offered as Reserved Parking and incur fees (@2016-2017) of \$352.00 + GST per Quarter.

These parking spots are allocated to florists and commercial businesses only and are reserved up until 5:30am Monday to Friday.

Extra Flower Market parking is available for the public, Florists and commercial businesses as non-reserved parking pass holders on the top level of the Western car park. This is being managed by the Operations team.

- Forklifts must give way to all pedestrians AT ALL TIMES.
- Between the hours of 4.15 and 6.00am forklifts must travel at a walking pace when operating inside Building D.

THE PRIORITY IS REDUCING THE RISK OF FORKLIFT AND PEDESTRIAN INTERACTION. ALL STAKEHOLDERS ARE REMINDED THAT FORKLIFTS ARE NOT PERMITTED TO ENTER BUILDING D FROM 6.00AM TO 3.00PM ON SATURDAY.

BUILDING D – SATURDAY PADDY'S FRESH FOOD MARKET

New Forklift Cut off Times to Commence from 6th May 2017

SML and SafeWork NSW recently reviewed the operation of forklifts within Building D during the Saturday Paddy's Fresh Food Market and as a result, the cut off times for forklifts entering Building D during Saturday Paddy's Fresh Food Market trading will be changed between the hours of 4.15am and 3.00pm to provide a safer pedestrian environment.

Stakeholder consultation will be undertaken until 6 May 2017 when new forklift operating procedures will be introduced whereby from 4.15am to 6.00am on Saturdays, forklifts will only be permitted to access Building D with a spotter.

Guidelines will be as follows:

- All tenants and Buyers are to ensure that the operator of the forklift is guided into and out of Building D by a spotter, which must be supplied by the Building D Tenant. If there is no spotter then a forklift cannot enter or exit Building D between 4.15am and 6.00am.



WINE GRAPE SEASON

The 2017 Wine Grape trading season commenced on Friday 10th March in the Sydney Markets Rail area and will run for 10 weeks, finishing up on the 13th May.



NEW WORK HEALTH & SAFETY WEBPAGE

SML has introduced a dedicated Work Health and Safety (WHS) Webpage for all stakeholders on the Sydney Markets website. The webpage contains the Sydney Markets Work Health and Safety Management Plan and details of Safety Notices, Bi-Monthly Operations updates and Site Services Notices.

Your feedback is important; if you have any queries about the newly launched webpage, please contact the WHS Manager, John Pascucci on 0417 325 171.



JOIN US

FOR THE 2017 SYDNEY MARKETS FRESH AWARDS

WHEN: WEDNESDAY 19 JULY **TIME:** 6PM-10PM

WHERE: MUSEUM OF CONTEMPORARY ARTS, SYDNEY

A unique Awards event that celebrates the success and recognises greengrocers, florists, and Sydney Markets flower growers and fresh produce growers. There are 15 Awards to be presented including Greengrocer, Florist, Flower Grower and Produce Grower of the Year.

WHO SHOULD ATTEND?

Florists Greengrocers Growers Flower Growers Wholesalers Providores
Bloggers Sydney Markets Businesses Award Finalists, Family and Staff

FEATURING

CHRIS BATH
Master of Ceremonies

MENTAL AS ANYTHING
Special Performance

EARLY BIRD TICKETS

ON SALE 17 MAY, 2017

VISIT WWW.FRESHAWARDS.COM.AU



SITE SERVICES UPDATE

CAR PARK V EXTENSION PROJECT

Construction of the Car Park V Extension has now been completed and the 640 kW solar system is now producing electricity.

To date over 122MWh of power has been fed into the Sydney Markets low voltage embedded network.

The pedestrian bridge and Level 1 walkway has become a pedestrian highway for many people. A number of pedestrian crossings have been introduced to improve the safety for pedestrians.

Signage has been placed on the lift and wayfinding signage has now been installed.



DATA INFRASTRUCTURE

SML continues to upgrade and roll out the fibre network, upgrade cables / patch panels and tagging in all cabinets.

Please contact Marilyn Loch on 9325 6225 if you are interested in connecting to the SML fibre network.

BUILDING D – ELECTRICAL INFRASTRUCTURE UPGRADE

The upgrade of switchboards, power connections and Residual Current Devices is ongoing with completion expected in June.

The upgrade will reduce the cost for tenants who wish to install a cable reel and will improve electrical safety.

All power boxes will be removed from the internal wall areas.



IMPORTANT NOTICE

BUILDING ALTERATIONS/ NEW COOL ROOMS

For any building work or cool room construction the Strathfield LEP (Local Environmental Plan 2012) (SLEP 2012) is applicable for Sydney Markets.

Strathfield Council or a Private Certifier must be contacted for any applications and approvals.

All details must also still be submitted to SML as it is still necessary for any applications to Council to be accompanied by the Owner's Consent, which must be obtained from SML.

If you have an enquiry in relation to Building Works, i.e. new cool room or renovations, please contact the Site Services Department.

BUILDING B SWITCH ROOM RELOCATION

The 2nd Stage of the relocation of switchboards in Building B has now commenced, which will see the two switch rooms in the Buyers Walkway removed on the northern end. The installation of the cable trays is nearing completion and the huge cable reels have now been supplied.

Completion of the works is expected in June 2017. SML staff will coordinate a power shut down with the tenants that will be affected by the switch over from the old to the new switch room.

NEW ELECTRICITY METERS

Ausgrid has commenced replacement of the existing electricity meters with new remotely readable digital meters.

With the new digital meters, Ausgrid is offering monitoring of electricity consumption via a web based program. This service is available for a monthly fee.

It is recommended tenants talk to the Site Services Administrator, Marilyn Loch on 9325 6225 and advise of their preferences.



NBN CONNECTION

More than 90 Market Tenants have now taken up the opportunity to connect to the National Broadband Network (NBN).

SML recommends businesses contact their telecommunications provider well ahead of the indicated copper network cut off time in early 2018.

Please contact Nick Criniti on 0418 413 333 or Marilyn Loch on 9325 6225 to arrange a quotation if you wish to connect to the SML Fibre Network.

ESSENTIAL FIRE SERVICES – IMPORTANT NOTICE

Effective from 1st January 2017, Fire & Rescue NSW have increased the false alarm call out fee from \$1,250 to \$1,600. Chubb Fire & Security have also increased their processing fee from \$125 to \$160.

If you plan to carry out any building or cleaning works, roasting or toasting in your tenancy, please contact SML Security on 0409 325 232 to arrange for the smoke detectors to be isolated during the works. Any false alarm cost will continue to be passed on to the instigator.

CONTRACTORS WORKING ON SITE

All contractors working on site must adhere to the Sydney Markets Limited "Work Health Safety Management Plan". Please contact SML Operations 24/7 on 0409 325 232.

To view the WHS Plan online, go to:

www.sydneymarkets.com.au/markets/whs/work-health-safety-management-plan.html

CAROUSEL

THE

THECAROUSEL.COM



Live • Learn • Love

HEALTH - WELLNESS - FOOD - FASHION - BEAUTY - TECH - TRAVEL



PROPERTY UPDATE SYDNEY MARKETS PLAZA

SYDNEY MARKETS PLAZA SHOPS FOR LEASE

A great opportunity exists for a new retail business.

Join existing retail tenants such as the CBA, Westpac, ANZ, BOQ, Australia Post, Newsagency, Tigers Leagues Club, Pet Store, Chiropractor, Subway, Bakery, Cafés, Mobile Phone Retailer, Hairdresser and Butcher, along with commercial tenants such as Accountants, Dentist, & other professional services, plus a Hotel and Veterinary Hospital.

Shop 9-10 – 157m² (Approximately/Subject to survey).

Large premises with dual access from the South and North sides, featuring a small kitchenette. Available Now.

SYDNEY MARKETS PLAZA OFFICE SUITES FOR LEASE

Office Suite C13 – 29m² (Approximately)

Positioned on Level 2, with a Norther aspect overlooking the central Plaza courtyard. Available early June 2017.

SYDNEY MARKETS CONFERENCE CENTRE

The Sydney Markets Conference Centre is available for hire. The Centre can be used as one unit or divided into two. For details and bookings please contact the Executive Secretary on (02) 9325 6298.

SUBLETTING OF WAREHOUSE SPACE

The Sydney Markets Limited (SML) Memorandum of Lease for Warehouses does not permit the lessee to sublet their premises.

This helps to ensure that Sydney Markets can continue to maintain its Market operations and provide services to its shareholders while protecting your interest in Sydney Markets. SML also recognise that from time to time the needs of your business may change and your space requirements may not always remain the same. In light of this, SML has put in place a policy to allow Warehouse tenants to sublet part or whole of their Warehouse, providing that SML grants permission for the sublease and that a sublet fee is paid for the privilege.

However, an application must first be completed, submitted and approved by SML before any sublet can commence.

Sublet Application forms are available by contacting the Property Manager on 9325 6240 or the Operations Team Leader on 0417 325 232.



All Plaza tenants are reminded that Shops and Office suites are **SMOKE FREE ZONES**. Occupiers of any Market space are required under the Smoke Free Environment Act to see that persons do not smoke in their premises.

ENVIRONMENT UPDATE

ENVIRONMENT UPDATE

Higher than anticipated volumes of organic waste were received due to the wet weather conditions this Autumn. Despite this, Sydney Markets achieved an average recycling rate of 67% so far this year.

Cardboard collection and recycling has improved due to new initiatives implemented. Clean cardboard can be left at the end of the dockways for Wholesalers/Warehouses or taken directly to Green Point. Paddy's Standholder's can leave the Cardboard on their stand at the end of trading and it will be collected by our waste contractor, Veolia.



SEPARATE YOUR WASTE

Please ensure all fruit and vegetable waste is separated and taken to Green Point for recycling. If you remove the packaging from the fruit and vegetable waste and place it inside Cardboard bins (similar to watermelon bins) it reduces contamination and helps our recycling process.



RE-USE OR RECYCLE

There has also been a significant increase in the number of plain pallets around the site, so please don't discard them; take them directly to Green Point for re-use or recycling.

The new Polystyrene machine at Green Point recycles polystyrene boxes much faster and efficiently.



FOOD FOR CHARITY

Foodbank have employed a new person, Mr Ben Cox, who is actively sourcing food waste from Tenants within the Markets. If you would like to donate any suitable food waste for charity you can drop it off in the Rail Area beside the Weighbridge, Flemington Tuesdays to Fridays from 8:30am.

In the past year Foodbank have collected 491 tonnes of fruit and vegetables at Flemington! Well done to all the Tenants who have donated.

GREEN POINT OPERATION HOURS:

Wholesale & Growers	Mon to Fri	8.30am – 2.30pm
Sydney's Paddy's Markets (between Buildings A & B)	Fri & Sun	3.00pm – 6.00pm
Sydney's Paddy's Market (outside Building D – Door 4)	Sat ONLY	3.00pm – 6.00pm

KEEP OUR MARKETS CLEAN

Sydney Markets Limited is committed to providing a clean and safe environment. Tenants within Buildings A, B, C, D & E are also responsible for keeping work areas clean, including the buyer's walkways and common areas in all Buildings within the Markets. You should not use a blower as this causes dirt to be blown onto neighbouring stands and stock.

If you require a red lid General Waste bin or green lid Organic Waste bin contact the Environment Manager Mr Con Kapellos on 0417 325 173.

Remember – Do the right thing! Help keep our Market clean and safe!

DOB IN A DUMPER

If you see anyone dumping rubbish around the site call us immediately on 0409 325 232



RAISING THE BAR

INTRODUCING NAHIR MALKI



Hard work and determination comes naturally to Nahir Malki, the youngest son of Perwin and John Malki - owners of Pedro's Pies at Sydney Markets Plaza.

At the age of 16, Malki joined his local gym in an attempt to get active but hadn't anticipated that stumbling across footage of weightlifting champions from the 2012 Olympic Games would ignite his own passions to pursue the sport.

However, as with every great athlete Malki's journey towards becoming an Olympic Weightlifter was put on hold due to a ten month recovery period after he underwent a knee reconstruction.

"I was left with massive muscular imbalances along the left side of my body, especially through my lower back and core which meant I was not allowed to train for 10 months. If it wasn't for Kurt from Chirodynamic Health at Sydney Markets Plaza I wouldn't have recovered so well" explained Malki.

Although the recovery period was lengthy, Malki finally got back into training and went on to break two State records in his first year of competing in both the 156kg Clean and Jerk and 271kg Total.

In 2016, Malki won his first gold medal taking out the title as the 2016 Junior National Champion in the Super Heavyweight category. Leading up to this competition, Malki engaged in a rigorous training schedule, of up to 12 sessions a week while helping his parents out at their family business.

Recently Malki made the move to Melbourne to train alongside Yurik Sarkisyan, a former Soviet Armenian weightlifter and Olympic Medallist.

Yurik is one of the most decorated athletes by far in the weightlifting world and the greatest coach. I feel privileged to be given the opportunity to pursue my dream through the guidance and knowledge of this incredible man."

So, what's next for this exceptional young athlete?

"My dream is to represent Australia in the 2020 Tokyo Olympic Games and compete against the very best in the world. I know I am going to face lots of challenges, but if there's one thing I've learnt over the last few years it's that a dream doesn't become a reality without hard work, persistence and sacrifice."



Nahir Malki - Winner 2016 Junior National Champion in Super Heavyweight category

PEDRO'S PIES

Gourmet Pies, Sausage Rolls, Cakes & Drinks
Phone: 9746 7694 | Open Mon - Fri

CHIRODYNAMIC HEALTH

Chiropractor, Remedial Massage, Sport Injuries, Rehabilitation
Phone: 9764 1577
Open Mon - Fri, Sat - by appointment only

STAFF UPDATE



CHRIS COUSENS
Market Officer, Operations
Support Team
Commenced 30th January 2017



JASON BREKELMANS
Market Officer, Operations
Support Team
Commenced 13th March 2017



ANDREW BESALY
Market Officer, GTA Team
Commenced 20th March 2017



SHIRLENE BLOM
Marketing & Communications
Specialist
Commenced 7th March 2017



DAVID MONTGOMERY
Head of Retail Markets
Commenced 3rd April 2017

EMPLOYEE OF THE MONTH

SML would like to thank the following staff members who were awarded Employee of the Month for their exceptional efforts and achievements.

AUGUST 2016



CONRAD D'CRUZ
Finance Manager

SEPTEMBER 2016



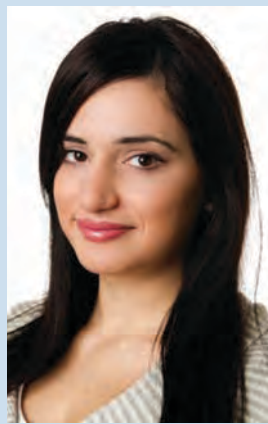
PAUL HALES
Market Officer, Operations
Support Team

OCTOBER 2016



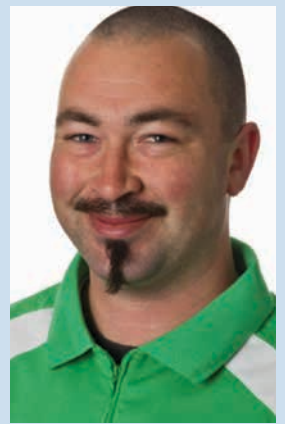
DARKO MRAOVIC
Assistant Team Leader,
Retail Markets Team

NOVEMBER 2016



ANTOINETTE MAATOUK
Executive Assistant,
Operations Team

DECEMBER 2016



TROY TUCKEY
Green Point Supervisor,
Environment Team

JANUARY 2017



CECILIA CHU
Property Officer, Operations Team

FEBRUARY 2017



SAM BRUNT
Market Officer, Operations Support Team

MARCH 2017



MILAN PLECAS
Market Officer, GTA Team



Toyota Material Handling is the forklift leader in Australia's fresh fruit and vegetable markets.

1. Proven performers in the fruit and vegetable markets environment
2. New and used forklift purchase, rental or lease options
3. Superior service and parts back-up and support
4. Massive range with Toyota Material Handling's world leading products
5. Flexible finance deals through Toyota Finance
6. Stability of dealing with the world's largest forklift company

To make the smart choice and discover how Toyota Material Handling can make a difference to your operations, contact your local branch.



Hand Pallet Trucks



Power Pallet Trucks



Order Pickers



Walkie Stackers



Reach Forklifts



Battery Counterbalance



Engine Counterbalance



Skid Steer Loaders



Toyota Material Handling offer
 • New Sales • Pre-owned • Rentals
 • Finance • Service and Parts

1800 425 438
www.toyotamaterialhandling.com.au

TOYOTA
MATERIAL HANDLING